

1300 / 1550
nm

PD-1375*-ip

Description:

PD-1375*-ip – is a series of photodetector modules for spectral range of 1300/1550 nm based on InGaAs PIN photodiode and coupled with singlemode (PD-1375s-ip) or multimode (PD-1375m-ip) optical fiber. Hermetically sealed modules are performed in standard coaxial package with built-in collimating ball lens. The modules operate in wide temperature range, have high spectral responsivity and low dark current.

PD-1375*-ip – are the best photodetectors for digital (up to 622Mb/s) fiber-optic communication lines, optical testers, systems of optical synchronization and other applications.



Optical and electrical characteristics (T=25°C):

Characteristics	Symbol	Test condition	Min	Typ.	Max	Units
PIN photodiode						
Diameter of photosensitive area	D			120		μm
Spectral range of maximum responsivity	λ_{OP}		1100		1650	nm
Responsivity	R	$U_{REV}=5.0V, \lambda=1300nm$	0.8	0.9		A/W
Dark current	I_D	$U_{REV}=5.0 V$		1.0	2.0	nA
Capacity	C_{PD}	$U_{REV}=5.0 V, f=1 MHz$		1.5	1.7	pF
Rise time/fall time	τ_R/τ_F	$P_{OP}=5.0 V$		0.3	0.5	ns
Optical fiber						
Fiber core/cladding diameter	D_C/D_{CL}	PD-1375s-ip		9/125		μm
		PD-1375m-ip		50/125		
Fiber length	L		300		1500	mm
Optical connector type				«FC»		

Absolute maximum ratings:

PIN photodiode						
Max. reverse bias	U_R			5.0		V
Max. forward current	I_F			2.0		mA
Max. reverse current	I_R			1.0		mA
Environment						
Operating temperature range	T_{OP}			-40..+55		°C
Storage temperature range	T_{STR}			-40..+70		°C
Pin soldering temperature				200		°C
Pin soldering time				3.0		sec

ROITHNER LASERTECHNIK

A-1040 VIENNA, SCHOENBRUNNER STRASSE 7, AUSTRIA

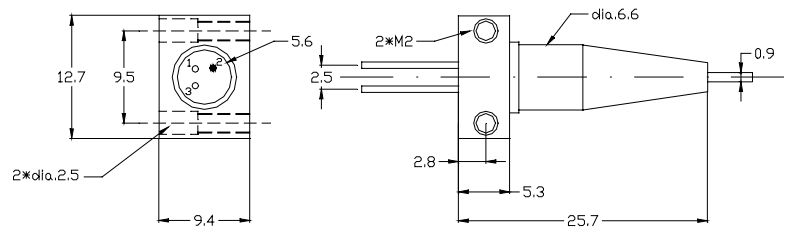
TEL: +43 -1- 586 52 43-0 FAX: +43 -1- 586 52 43-44

e-mail: office@roithner-laser.com http://www.roithner-laser.com

PD-1375*-ip

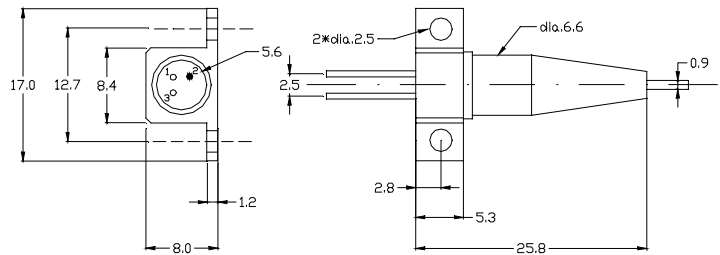
Package specifications (type «A»):

Pin	Function
1	PD cathode (+)
2	case
3	PD anode (-)



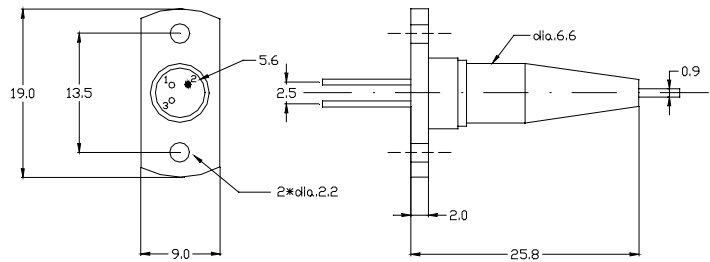
Package specifications (type «B»):

Pin	Function
1	PD cathode (+)
2	case
3	PD anode (-)



Package specifications (type «C»):

Pin	Function
1	PD cathode (+)
2	case
3	PD anode (-)



ROITHNER LASERTECHNIK

A-1040 VIENNA, SCHOENBRUNNER STRASSE 7, AUSTRIA

TEL: +43 -1- 586 52 43-0 FAX: +43 -1- 586 52 43-44

e-mail: office@roithner-laser.com <http://www.roithner-laser.com>