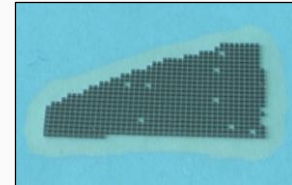




ELC-660-23-1



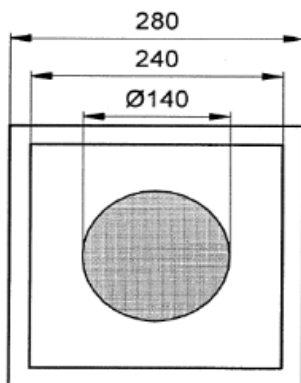
Description

ELC-660-23-1 is a AlGaAs/AlGaAs based 280x280 μm bare LED chip die of double hetero structure in dual combination (DDH) with gold plated electrodes. It has a typical emission wavelength of 660 nm. **ELC-660-23-1** is delivered on adhesive film with the wire bond side up.

Characteristics ($I_F=20\text{mA}$, $T_{AMB}=25^\circ\text{C}$)

Parameter	Symbol	Values			Unit
		Min.	Typ.	Max.	
Emission Wavelength	λ_{peak}	657	660	663	nm
Forward Voltage	V_F		1.8	2.3	V
Reverse Voltage ($I_R=10\mu\text{A}$)	V_R	5			V
POWER (bare die on TO header)	P_O	1.5	1.8		mW
POWER (epoxy covered die on TO header)			2.8		
Rise/Fall time	t_R/t_F		80/90		ns
Spectral bandwidth (FWHM)	$\lambda\Delta$		25		nm

Drawing & Dimensions



N (cathode) up

All dimensions in μm

Thickness	160 ± 20	μm
Anode, gold alloy	1.5	μm
Cathode, gold alloy	0.5	μm