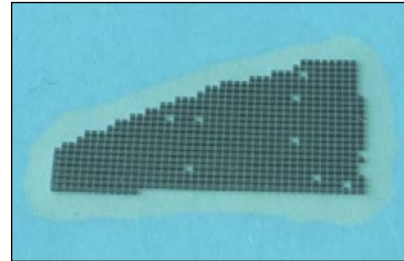




ELC-590-13



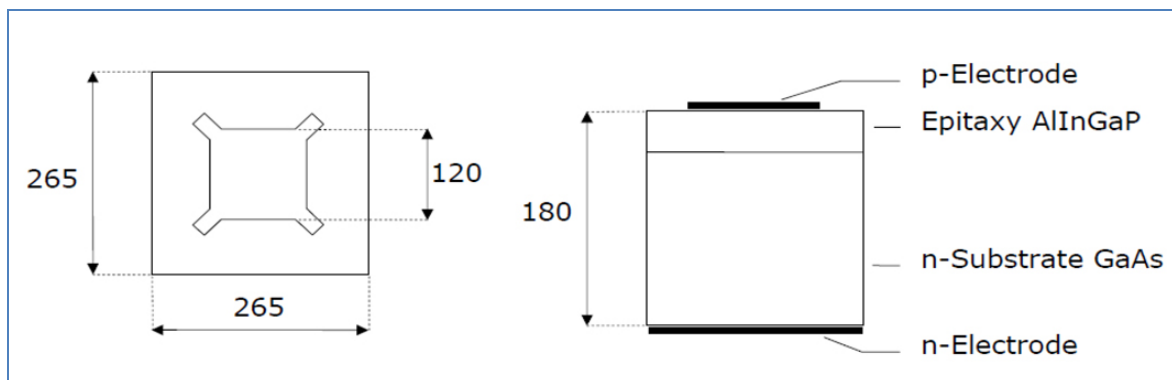
Description

ELC-590-13 is a AlInGaP based 265x265 μm bare LED chip die on GaAs substrate. It has a typical emission wavelength of 590 nm. It is delivered on adhesive film with the wire bond side up

Characteristics ($I_F=20\text{mA}$, $T_{AMB}=25^\circ\text{C}$)

Parameter	Symbol	Min.	Values		Unit
			Typ.	Max.	
Peak Wavelength	λ_{peak}		590		nm
Dominant Wavelength	λ_D		588		nm
Forward Voltage	V_F		2.1	2.4	V
Reverse Current ($V_R=5\text{V}$)	I_R			10	μA
Luminous Intensity	I_V		150		mcd

Drawing & Dimensions



All dimensions in μm