



## SPLH635-01W-M

- RED Pigtailed Laser Diode
- 638 nm, 1 W
- 105  $\mu\text{m}$  Multi Mode Fiber
- FC/PC connector
- Heat Sink



### Description

**SPLH635-01W-M** is an red pigtailed laser diode, typically emitting at 638 nm with an output power of 1 W. It comes in a coaxial package with **105  $\mu\text{m}$  multi mode fiber** and FC/PC connector.

### Maximum Rating ( $T_{\text{CASE}} = 25^{\circ}\text{C}$ )

Parameter	Symbol	Values		Unit
		Min.	Max.	
Reverse Voltage	$V_R$		2.0	V
Operating Temperature	$T_{\text{OPR}}$	- 40	+ 40	$^{\circ}\text{C}$
Storage Temperature	$T_{\text{STG}}$	- 40	+ 85	$^{\circ}\text{C}$
Soldering Temperature (max. 3s)	$T_{\text{SOL}}$		+ 260	$^{\circ}\text{C}$



### Electro-Optical Characteristics ( $T_{\text{CASE}} = 25^{\circ}\text{C}$ )

Parameter	Symbol	Values			Unit
		Min.	Typ.	Max.	
<b>Peak Wavelength</b>	$\lambda_P$	<b>630</b>	<b>638</b>	<b>645</b>	<b>nm</b>
Output Power	$P_O$	0.9	1.0		W
Spectral Width (FWHM)	$\Delta\lambda$		2.0		nm
Operating Voltage	$V_F$		2.4		V
Threshold Current	$I_{\text{th}}$		0.3		A
Operating Current	$I_F$		1.5		A
Fiber Specification	type		multi mode		
	core		105		$\mu\text{m}$
	connector		FC/PC		
	length		80		cm

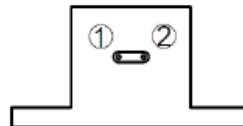


## Electrical Connection

### Pin Configuration\*

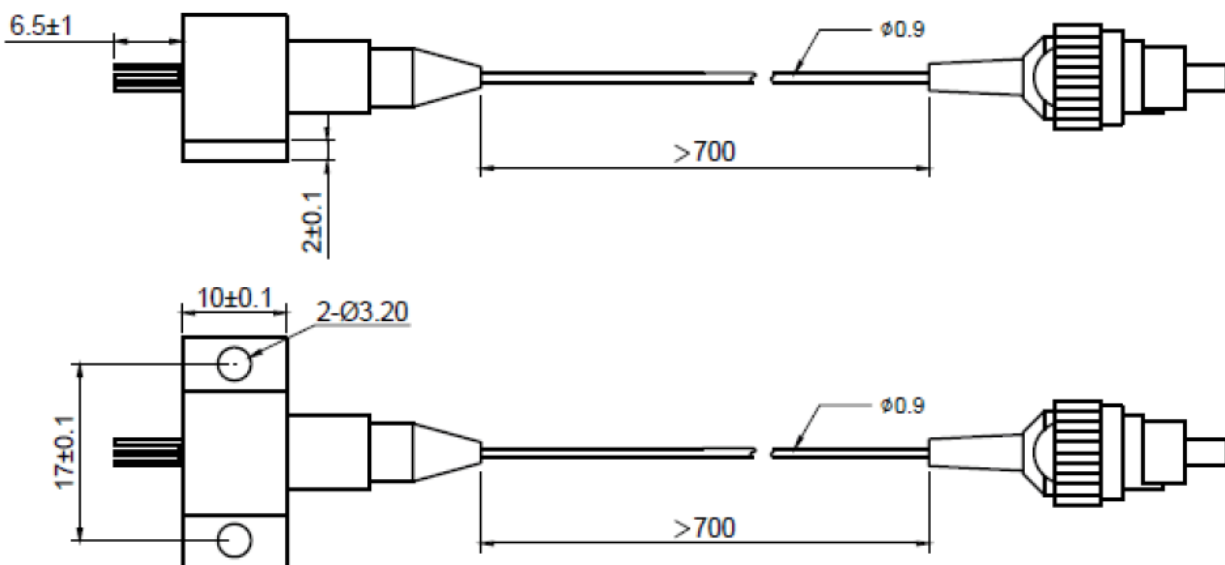
Pin #	Function
Pin 1	LD cathode
Pin 2	LD anode

### Bottom View



\* subject to change

## Outline Dimension



All dimensions in mm